

EMC CISPR Compliance Measurements

Agilent Technologies and ETS-Lindgren

Ensure your products comply with the latest CISPR and other international EMC standards

The continuing development of international electromagnetic compatibility/electromagnetic immunity (EMC/EMI) standards such as CISPR brings new challenges when trying to ensure the compliance of your products. The ability to address these challenges requires EMC/EMI lab management software and test instrumentation with the flexibility to adapt.

ETS-Lindgren and Agilent Technologies can provide the flexibility you need to ensure your products comply with the very latest CISPR standards. ETS-Lindgren's TILE!™ (Total Integrated Lab Environment) software when combined with the new N9038A MXE EMI receiver from Agilent Technologies allow change to be accommodated easily — both for now and in the future.

TILE! automates complex EMC tests with a simple drag-and-drop visual interface. It is a well-established solution, with more than 200 installations in private and commercial EMC test labs world-wide. TILE! is maintained by a factory team that includes members of the standards committees, ensuring that the latest standards revisions are incorporated in the software. The TILE! open platform design supports most popular EMC instrumentation, including the new Agilent MXE EMI receiver.



The Agilent MXE is more than a CISPR-compliant EMI receiver, it features X-Series signal analysis and graphical measurement tools for easier examination of signal details. The MXE is fully compliant with CISPR 16-1-1 2010 and provides outstanding accuracy and sensitivity, extensive built-in diagnostic tools for EMI troubleshooting, two frequency ranges and all required detectors. The MXE allows you to move seamlessly between receiver and spectrum analyzer modes to speed the evaluation of your signal data.

When integrated with EMC chambers, antennas, towers, turntables and test accessories from ETS-Lindgren, TILE! and the MXE provide the foundation of a comprehensive test system to meet all of your EMC compliance needs.

Together TILE! and the new Agilent MXE EMI receiver offer EMC labs a flexible, integrated solution that allows you to ensure the compliance of your products to international standards such as CISPR both today and tomorrow.

- **CISPR-compliant electromagnetic compatibility measurements**
- **Integrates Agilent MXE EMI receiver with ETS-Lindgren TILE! software**
- **Comprehensive compliance solution with ETS-Lindgren chambers and accessories**
- **Prove compliance to CISPR and other international standards**



Agilent Technologies

EMC CISPR Compliance Measurements



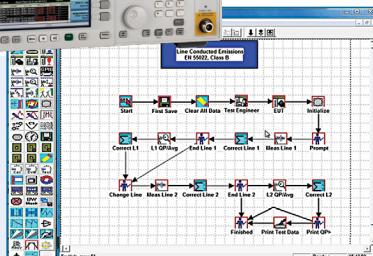
System Components

Agilent Technologies

N9038A MXE EMI receiver

ETS-Lindgren

TILE! Total Integrated
Lab Environment Software



To learn how this solution
can address your specific needs
please contact
Agilent's solutions partner,
ETS-Lindgren

www.agilent.com/find/ETS-L

Enabling Your Success™

ETS·LINDGREN
An ESCO Technologies Company



Agilent Technologies

Global Solutions Partner

Agilent Solutions Partner Program

Agilent and its Solutions Partners work together to help customers meet their unique challenges, in design, manufacturing, installation or support. To learn more about the program, our partners and solutions go to www.agilent.com/find/solutionspartner

ETS-Lindgren

For more information about TILE! and the other products and services available from ETS-Lindgren, please contact:

www.ets-lindgren.com

For information on Agilent Technologies' products, applications and services, go to www.agilent.com

Product specifications and descriptions in this document subject to change without notice. TILE!™ is a trademark of ETS-Lindgren.

© Agilent Technologies, Inc. 2009-2011
Printed in USA, November 17, 2011
5990-7682EN



Agilent Technologies